



When designing Petunia, Kim was inspired by a trip to the International Folk Art Museum in Santa Fe. She gravitated towards the simple, honest, folky shapes of papercut art, and created a collection that has a similar earthy cottage vibe. The color palette is light and fresh like a sunny day. Kim envisioned the Gingham print being fun to cut in in lots of different ways - we see it as a cute binding! **Low Cal assortment available ASSTR3045 10H (10 yds of 20 skus with \*).** All prints shown at 25% scale.

**NOVEMBER 2022 DELIVERY**

31 premium 100% Ruby Star Cotton prints

**ASSORTMENTS & PRECUTS**

ASSTRS3045 (15) (10) (10H)

RS3045 (F8) (FQ) (JR) (LC) (PP) (MC)

**SUGGESTED HOLE PUNCH DOT COORDINATES & COMPLEMENTS**

RS3025 (29) (13) (12) (11) (35) (22) (15)

**SUGGESTED SPECKLED COORDINATES & COMPLEMENTS**

RS5027 (64M) (26M) (41M) (67M) (91M) (59M) (61M)

**SUGGESTED MODA BELLA SOLID COORDINATES & COMPLEMENTS**

9900 (124) (292) (91) (379) (176) (136) (174)

SPRIGS | CAYENNE



RS3050 15\*

WALLFLOWER | CAYENNE



RS3051 14

BOUQUET | MACARON



RS3046 13\*

PAPER GARDEN | MACARON



RS3048 13\*

TURNIPS | HONEY



RS3047 12\*

CLIPPINGS | HONEY



RS3045 14\*

HOLE PUNCH DOT | HIGHLIGHT



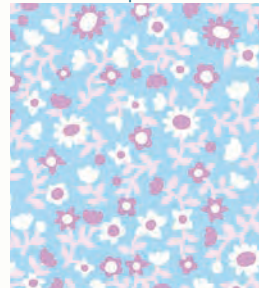
RS3025 42

TURNIPS | LILY PAD



RS3047 13\*

PAPER GARDEN | HYDRANGEA



RS3048 16\*

HOLE PUNCH DOT | HYDRANGEA



RS3025 43

GINGHAM | HYDRAGEA



RS3052 11\*

TULIPS | HONEY



RS3049 12\*

SPRIGS | LILY PAD



RS3050 16\*

TULIPS | HYDRANGEA



RS3049 15\*

CLIPPINGS | FLAMINGO



RS3045 12\*

CLIPPINGS | PALE PINK



RS3045 11

WALLFLOWER | HONEY



RS3051 13

TULIPS | DOVE



RS3049 14

BOUQUET | SMOKE



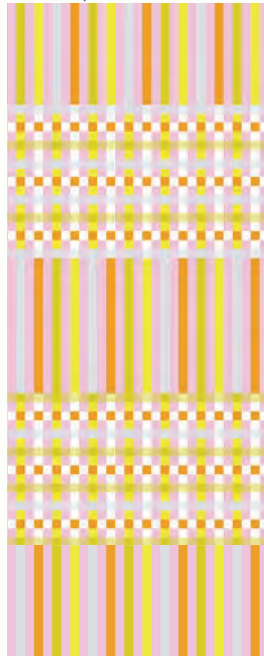
RS3046 15\*

BOUQUET | FLAMINGO



RS3046 12\*

GINGHAM | HYDRAGEA



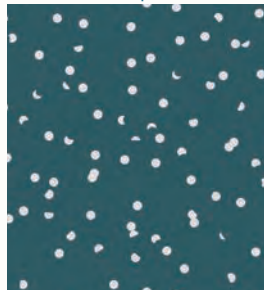
RS3052 12\*

PAPER GARDEN | DOVE



RS3048 15\*

HOLE PUNCH DOT | SMOKE



RS3025 44

SPRIGS | FLAMINGO



RS3050 12

SPRIGS | OPAL



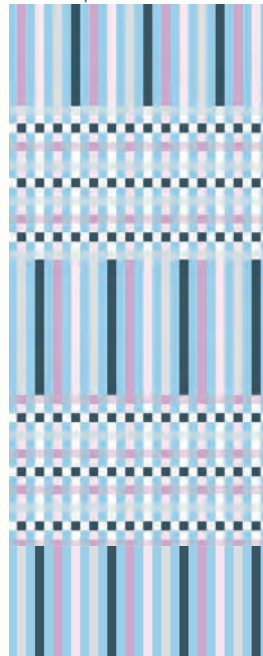
RS3050 13

WALLFLOWER | BUTTERCREAM



RS3051 11\*

GINGHAM | HYDRAGEA



RS3052 14\*

TURNIPS | BALMY



RS3047 11\*

HOLE PUNCH DOT | OPAL



RS3025 41

SPRIGS | BUTTERCREAM



RS3050 11



TURNIPS | SMOKE



RS3047 14\*



HEJ 108 Homemade Emily Jane | Sail

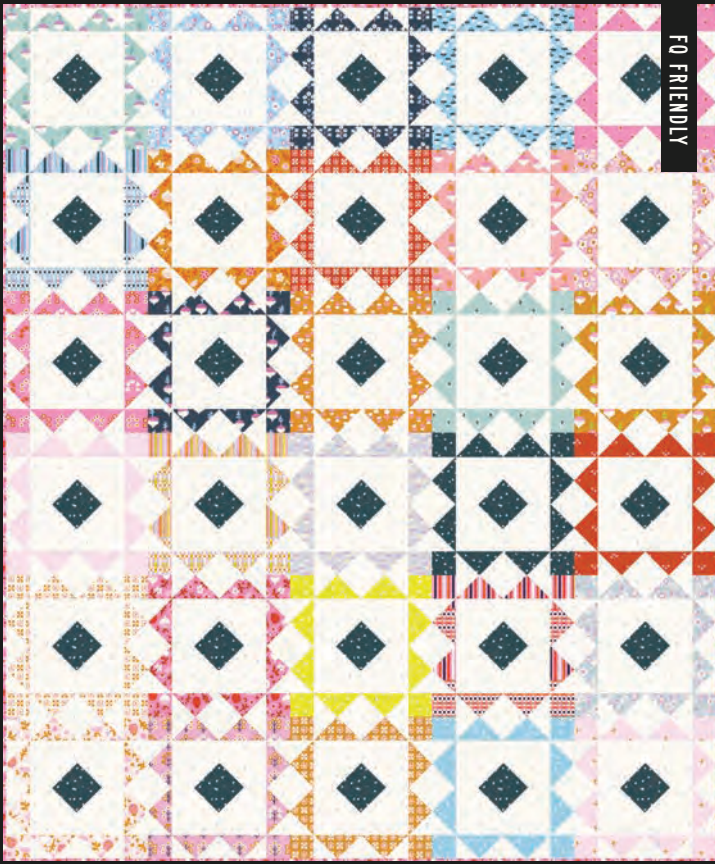
64" x 80"



LBS 122 Lo & Behold Stitchery | Heirloom Hearts

63" x 72"





FO FRIENDLY

HEJ 104 Homemade Emily Jane | Reverberate

60" x 72"



FO FRIENDLY

KKS 002 Kimberly Kight Studio | Floating Leaves  
designed by Peach & Pluto

60" x 72"



74 1144  
Indygo Junction  
Bistro Apron

