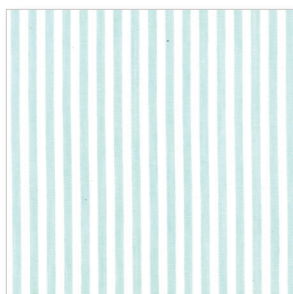


# Holiday Traditions

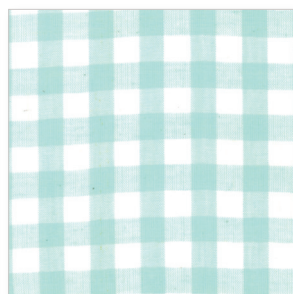
*We have lots of traditions in our family, but one of our favorite Christmas traditions is on Christmas morning all the kids sit on the stairs in their brand new pajamas bursting with anticipation while they wait for mom to get the camera and dad to turn on the lights and make sure everything is ready. We all have to run down together to see what Santa brought- and no peeking! We did this every Christmas growing up and have now passed the tradition down to the next generation. Those Christmas morning photos on the stairs are some of our very favorites.*

# Bonnie & Camille Wovens

We love plaids. And dots. And stripes, of course! Doesn't everybody? On their own or mixed with our favorite prints, our new woven collection adds texture and dimension in a refreshing way to all of your Bonnie & Camille projects. Perfect for picnics, everyday quilts, Christmas quilts and everything else, our wovens coordinate beautifully with all of our fabric collections. And when they're paired with Bonnie & Camille Basics, they really shine. Woven fabrics have the modern-traditional look we both love and designing a line that coordinates with our fabrics has been on our wish list for too long! We couldn't love these silky wovens more!



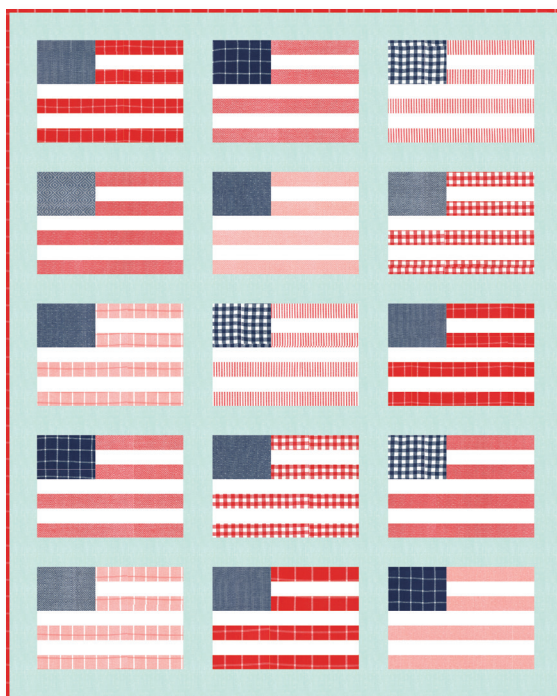
12405 13



12405 15

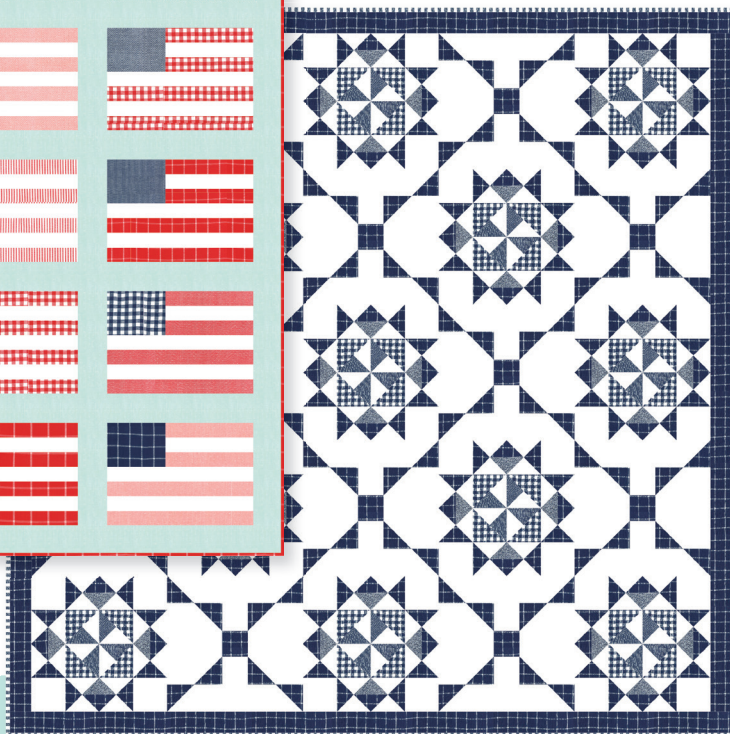


12405 11



TB 226 / TB 226G  
Stars and Stripes Size: 56"x71"  
FQ Friendly

CW 1023 / CW 1023G  
Starry Starry Night Size: 80"x80"



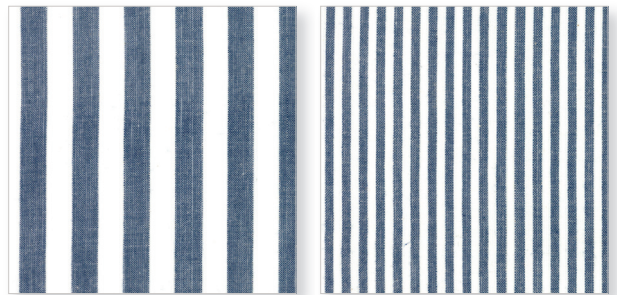




TB 231 / TB 231G  
Dreamboat Size: 70"x70"  
LC Friendly

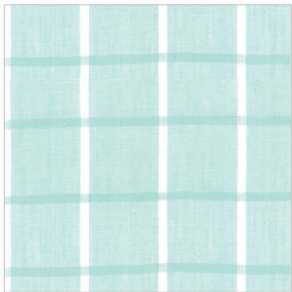


12405 33



12405 36

12405 35



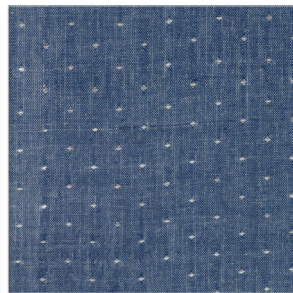
12405 14



12405 12



12405 31



12405 34



12405 30



12405 32

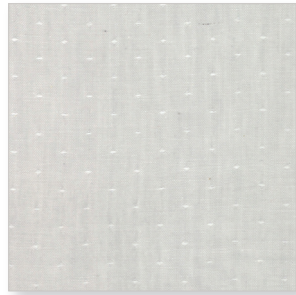
TB 232 / TB 232G  
All Bundled Up Size: 72"x82"



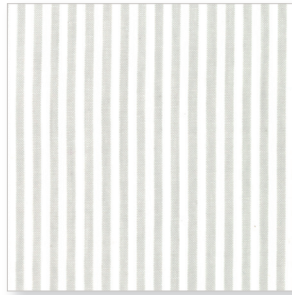




12405 25



12405 29



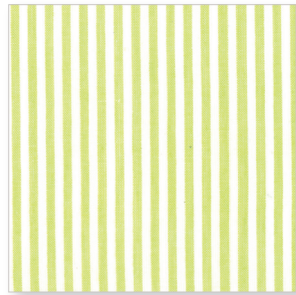
12405 26



12405 28



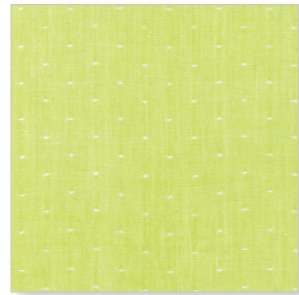
12405 27



12405 39



12405 40



12405 37

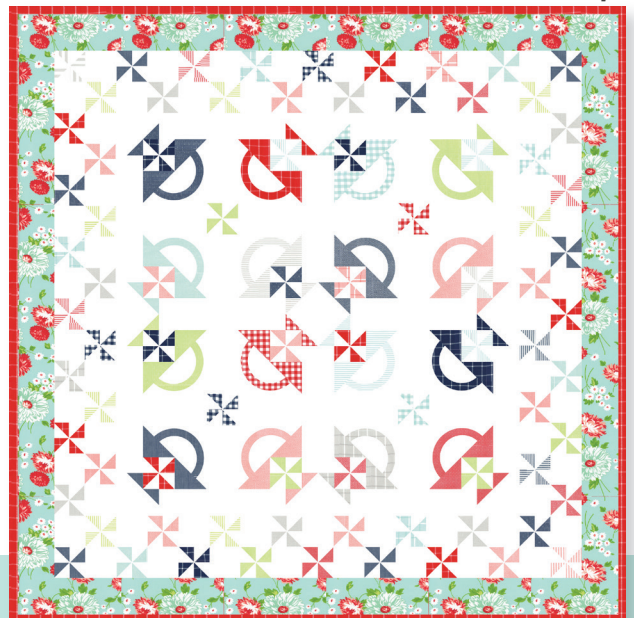


12405 38

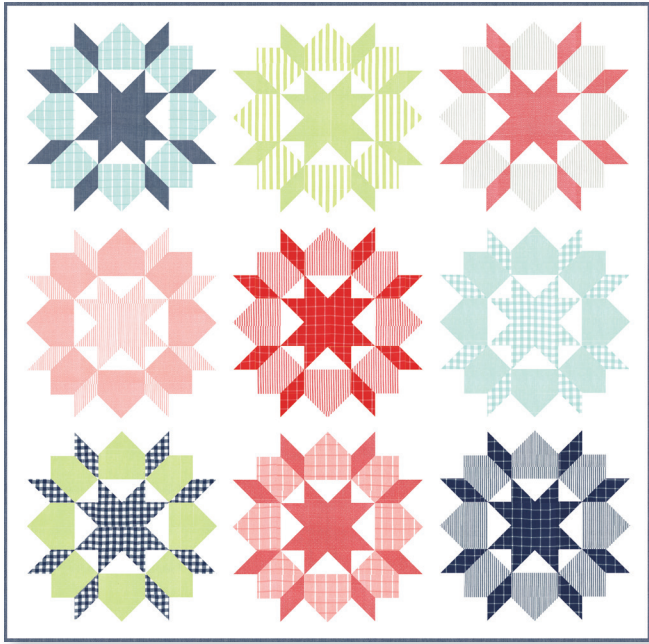


CW 972 / CW 972G  
Cozy Size: 90"x90"  
LC Friendly

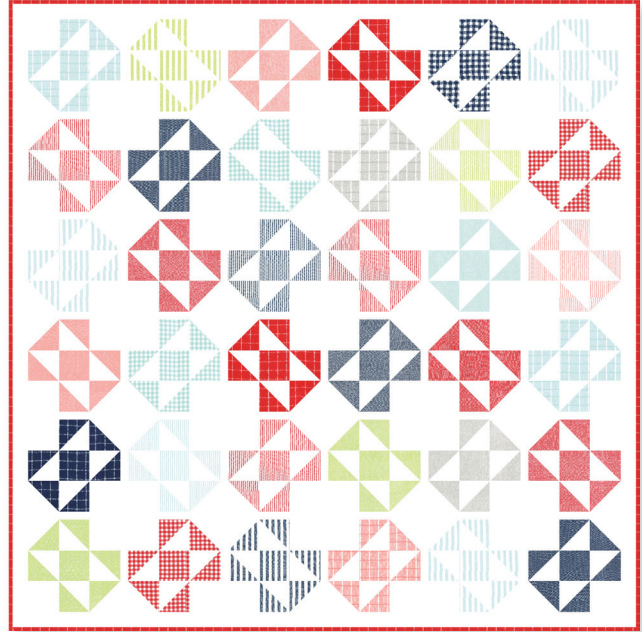
B1429 / B1429G  
Cotton Way Classics Baskets of Marmalade  
Size: 60"x60"  
LC Friendly



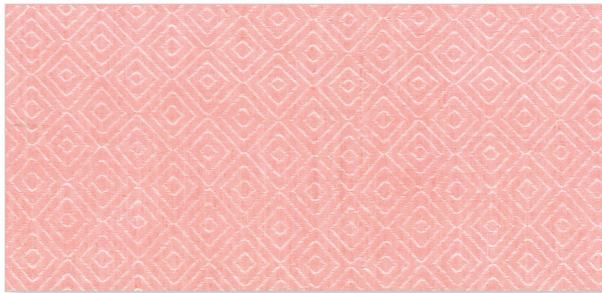




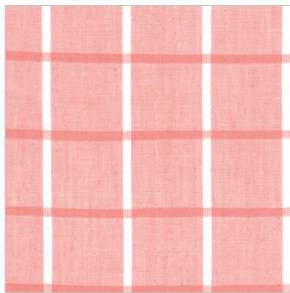
TB 142 / TB 142G  
Swoon Size: 80"x80"  
FQ Friendly



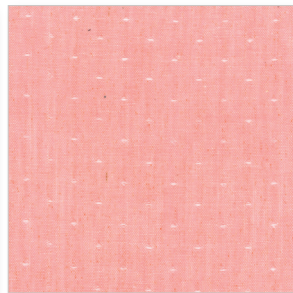
CW 1024 / CW 1024G  
Bake a Cake Size: 82"x82"  
LC Friendly



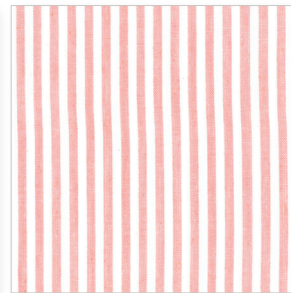
12405 22



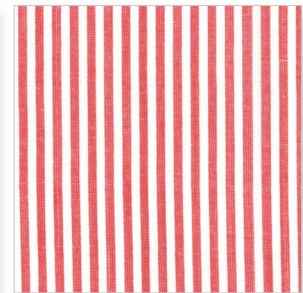
12405 21



12405 24



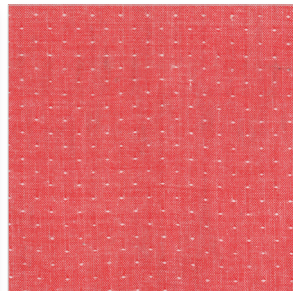
12405 23



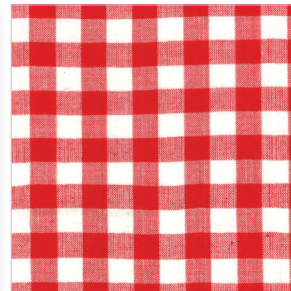
12405 20



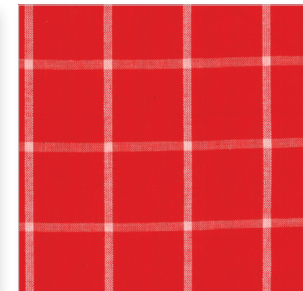
12405 17



12405 19



12405 18



12405 16