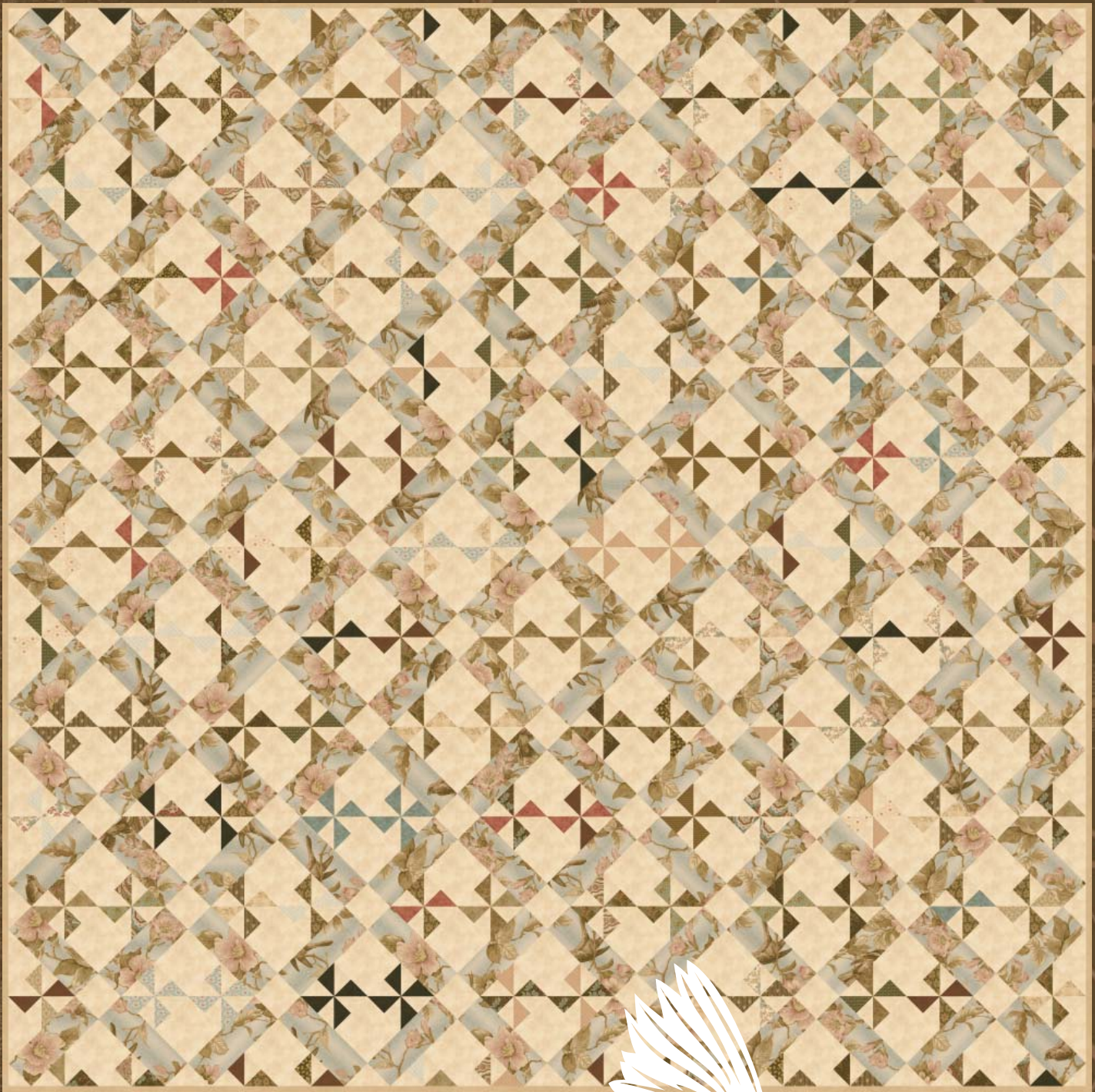


QUILT MADE BY KATHY BAUER.



Collection for a Cause  
*Howard Marcus*

MODA PS 46000  
KIT: KIT46000  
QUILT SIZE: 91"x91"

*Heritage — 1846*



*moda*  
**CLASSIC**

*Howard Marcus*



*Heritage* – FIRST IN A SERIES



**T**HE FABRICS for this quilt were pulled from a 19th century antique quilt in our collection. Pieces were painstakingly reproduced in historical detail in an effort to maintain the beautiful balance of the original quilt. Once expanded into a full collection its' sophistication and detail is captivating.

Proceeds from this collection, *Heritage*, will be donated to Gilda's Club, which seeks to provide an emotional and social support community for people living with cancer. This gift is will be given in memory of our colleague, Pam Wieland.

Collection for a Cause is an ongoing program begun by owner, Howard Marcus Dunn. It will feature antique quilts from our collection and support charities and causes that touch the hearts and lives of all of us.



KIT46000 91"x91"

*moda*

46007-11 AQUA LEAF STRIPE



46005-11  
AQUA BLOOM

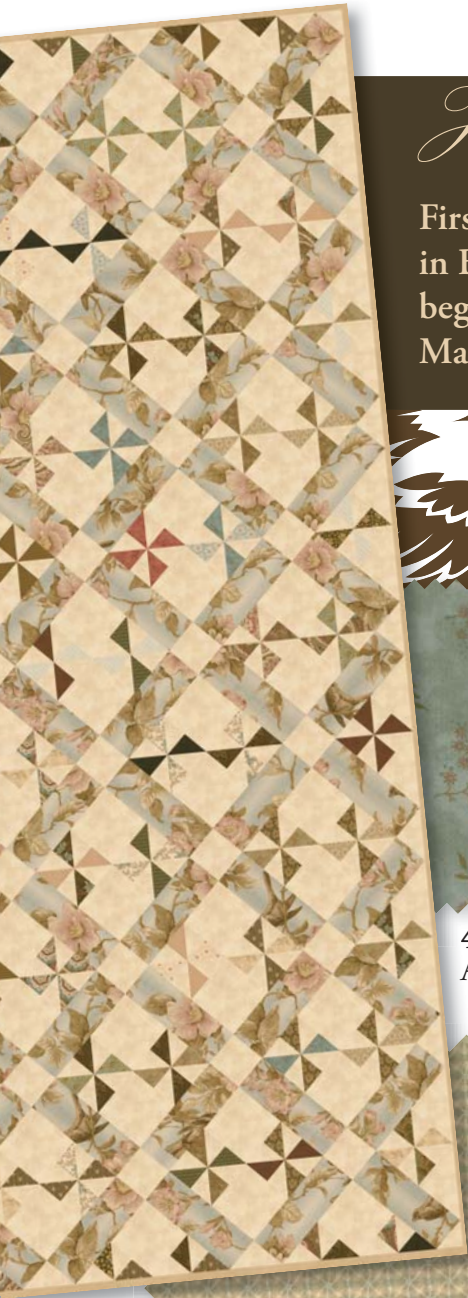


# Heritage — 1846

First in a series, *Heritage*, was made in Baltimore, Maryland. The quilt was begun in 1830 and completed in 1846. The maker is believed to be Mary Taylor of Baltimore. The quilt was made for a family member.



close-up of date on back of quilt



46001-11  
AQUA PAISLEY



46003-11  
AQUA SPRIGS



46002-12  
MUSLIN  
LEAVES & BERRIES



46009-11  
AQUA BIAS STRIPE

46004-12  
MUSLIN  
BRAMBLES

46006-12  
AQUA GRID



46000-12  
AQUA BIRDS & FLOWERS



46008-12  
MUSLIN  
MUSLIN



46004-11  
AQUA BRAMBLES







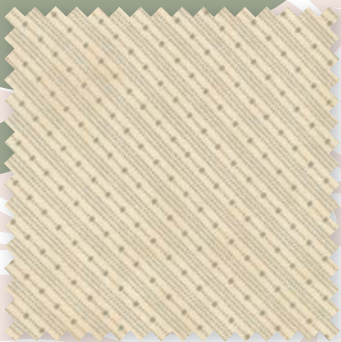
**46002-13**  
TAN LEAVES & BERRIES



**46003-27**  
ROSE SPRIGS



**46003-23**  
TAN SPRIGS



**46009-12**  
MUSLIN



**46001-13**  
MUSLIN PAISLEY



**46008-13**  
TAN TAN



**46009-19**  
RUST BIAS STRIPE

*moda*



**46005-17**  
ROSE BLOOM



**46009-13**  
ROSE BIAS STRIPE



**46000-13**  
TAN BIRDS & FLOWERS

*Forward Marcus*



46005-15 TAN BLOOM



46002-14 BROWN LEAVES & BERRIES

*moda*

46006-15  
TAN GRID



46004-13 TAN BRAMBLES



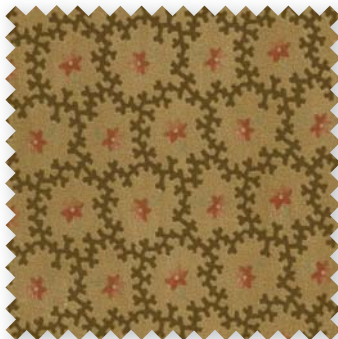
46002-24  
TAN LEAVES & BERRIES



46007-14  
TAN LEAF STRIPE



46003-14  
TAN SPRIGS



46004-15  
BROWN BRAMBLES



46000-15  
BROWN BIRDS & FLOWERS



46001-15 BROWN PAISLEY



Collection for a Cause by *Howard Marcus*

*Howard Marcus*



**46001-16**  
DARK BROWN PAISLEY



**46002-16**  
DARK BROWN LEAVES & BERRIES



**46000-16**  
BROWN BIRDS & FLOWERS



**46006-16**  
DARK BROWN GRID



**46002-26**  
BROWN LEAVES & BERRIES



**46007-16**  
DARK BROWN LEAF STRIPE



**46006-26**  
BROWN GRID



**46009-16**  
DARK BROWN BIAS STRIPE



**46005-16**  
BROWN BLOOM

## Delivery: September, 2008

- Asst. 46000-10 10 Yards of Each-Prints
  - Asst. 46000-15 15 Yards of Each-Prints
  - Asst. KIT46000 15 Yards of Each-Prints
  - 46000AB Bundle: 40 Skus
  - 46000JR Jellyroll – (40)2½"x45" Strips – Pk 4
  - 46000LC Layer Cake – (40)10"x10" Squares – Pk 4
  - 46000PP 5"x5" Squares – Pk 25
  - KIT46000 –Kit includes fabric, pattern & binding
  - PS46000 Project Sheet – Pk 25
- Skus: 40 Prints  
Content: 100% Cotton







# Moda Marbles

100% Cotton • 44/45" Wide • 15 Yds D/R

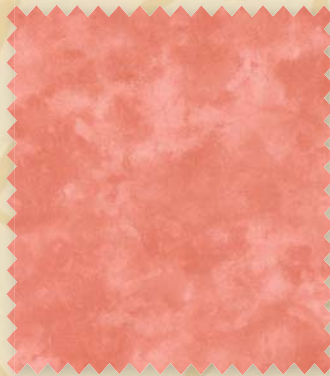
12 new colors:



9882 20 TANGERINE



9882 21 CLAY



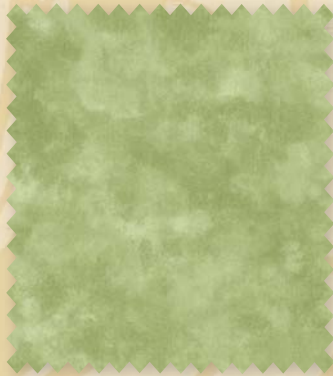
9882 11 BLUSH



9882 12 SUNSET



9882 22 DANDELION



9882 18 TROPICAL GREEN



9882 19 RAIN FOREST



9882 16 DUSK



9882 14 FOUNTAIN BLUE



9882 13 SLATE BLUE



9882 15 PACIFIC BLUE



9882 17 DEEP POND

Moda Marbles