

★ OFFICIAL ★  
RUBY STAR  
SOCIETY  
PATTERN CO.

# SWATCH QUILT

*project sheet*



FABRIC BY ALEXIA MARCELLE ABEGG

# CUTTING INSTRUCTIONS

---

Need 1/3 of all fabric below | Cut each into (6) 4½" x 10½" rectangles

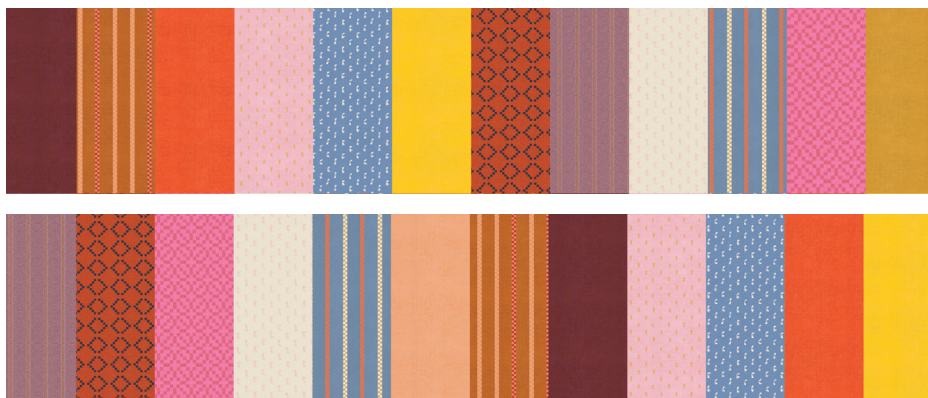


# PIECING INSTRUCTIONS

---

1/4" Seam Allowance

1. This quilt is made up of two alternating horizontal rows. Sew three of each of the rows shown below.



2. Press the seams of your rows in alternating directions starting with the upper most row (row 1) of the quilt. Press row 1 seams to the left, then press row 2 seams to the right, repeating until all of your rows are pressed. This will allow the seams to nest in the next step.

3. Sew the rows of the quilt together, matching seams and keeping the seams pressed in alternate directions so that the seams nest. Start with the first two rows of the quilt, and then continue, sewing the next row to the lower edge of the previous row until the quilt top is complete.

4. Quilt and bind as desired.

**YOU DID IT! YOU MADE A SWATCH QUILT!!**

Be sure to use #rubystarsociety when sharing your creations so we can see them!

# SWATCH QUILT

The Swatch is the perfect quilt for instant gratification. It is simple but bold, with a patchwork look that has a lot of color play! It is a great beginner quilt, but we recommend using our wovens as it is a great skill builder for those who haven't used them before!

Fabrics are from Warp & Weft and Warp & Weft Honey by Alexia Marcelle Abegg for Ruby Star Society. Quilt designed by Alexia Marcelle Abegg.



48" x 60"

## FABRIC REQUIREMENTS

*Need 1/3 of all fabrics below*



**BINDING:** ½ yd

**BACKING:** 4¼ yd

**BATTING:** at least 74" x 74"

★ RUBY STAR  
SOCIETY ★

*moda*  
FABRICS + SUPPLIES

Copyright 2023 Alexia Abegg. Copying or otherwise redistributing is strictly prohibited. For personal use only.